



Modular Air, Water, Remote Cooled Nugget Ice Machine

ITEM NO.

NME950

C.S.I. File No. 11400



The NME950 represents Scotsman's commitment to R-404A Refrigerant (DuPont SUVA® HP62) as the sensible, permanent solution to the refrigerant issue.

LONG SERVICE LIFE

- Evaporator, auger and breaker are all fabricated from durable stainless steel.
- Innovative "Interrupted Flight" auger design minimizes bearing loads.
- New gearmotor design includes heavy duty ball bearings.
- Large spherical top roller bearing self aligns, reducing bearing wear.

ENHANCED RELIABILITY

- Advanced electronics eliminate mechanical switches and sensors.
- Electronic water level control prevents problems associated with water pressure fluctuations.
- Continuous length evaporator refrigerant tubing eliminates potential refrigerant leaks.

IMPROVED EFFICIENCY

- Photoelectric eye bin control allows maximum storage in bin.
- Continuous icemaking, no hot gas cycle, no water dump.
- Lower KWH usage per 100 lbs. of ice than cubers.

LOWER SERVICE COSTS

- Most major components are accessible from the machine front. Less repair time equals less repair costs.
- Installation made easy by placing all utility connections on back panel, accepting standard plumbing fittings.
- System design minimizes cost of component failure.

VERSATILITY

- Fits a variety of Scotsman Ice Storage Bins – the modular design allows the user to choose the right bin for their needs.

REMOTE CONDENSER

Heat removed during icemaking is carried to the remote condenser directly by refrigerant. There the heat is transferred to the outdoor air, and the refrigerant returns to the icemaker.

- Choose either single or double unit condenser.
- Fan motor operates from icemaker electrical supply.
- Choice of 25 foot or 40 foot precharged refrigerant line with easy to install quick connect couplings.

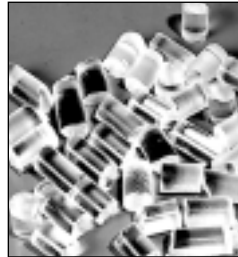
ENVIRONMENTALLY RESPONSIBLE

- HFC R-404A (HP-62) refrigerant.
- Non-CFC foam insulation.

WARRANTY PROTECTION

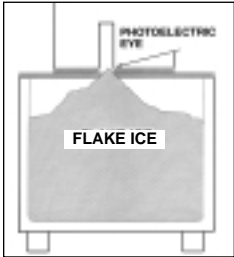
See Dealer for details of Limited Warranty.

- 24 Month Factory Labor.
- 24 Months on all parts.
- 5 Years on Compressor.
- Directory of Certified Dealer Service.



FLAKE ICE

Versatile, inexpensive to produce, used in salad bars, produce and fish displays.



PHOTOELECTRIC EYE

For maximum bin storage, photoelectric eye turns machine off when ice level reaches chute.



TOP BEARING

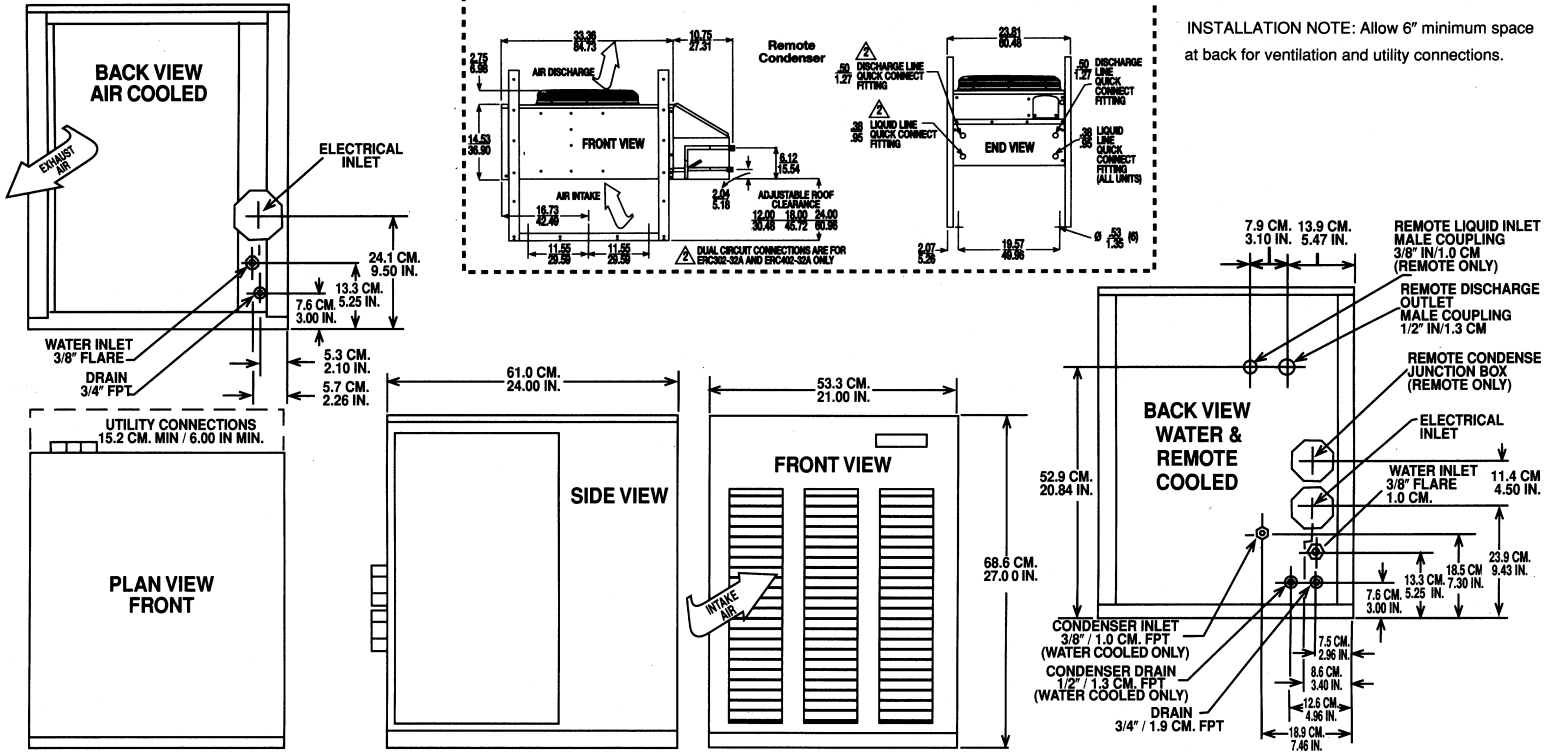
Extra large top bearing attached to auger and breaker reduces bearing wear.

This product qualifies for the following listings:



SCOTSMAN
Ice Systems The World Relies On.™

Consultant/Contractor Approval



All models: Dimensions: W x D x H Unit: 21" x 24" x 27" Shipping Carton: 24 1/4" x 27 1/2" x 32"

Model	Cond. Unit	Ice Prod. Lbs./24 hrs.		Finish	Ship Wt. lbs./kg.	Basic Electrical Volts/Hz/Phase	Comp HP	No. of Wires	Min. Circuit Ampacity	Max. Fuse Size or HACR Circuit Breaker	Power KWH/100 lbs.		Water Usage* Gallons/100 lbs.			
		70° Air	90° Water								90°/70°	70°/50°F	Potable 90°/70°	Condenser 70°/50°F		
NME950AE-32A	Air	1080	780	EG	290/132	208-230/60/1	1 1/2	2	11.3	15	3.94	2.90	12	12	—	—
NME950AE-3A	Air	1080	780	EG	290/132	208-230/60/3	1 1/2	3	8.4	15	3.63	2.54	12	12	—	—
NME950WE-32A	Water	1100	925	EG	290/132	208-230/60/1	1 1/2	2	10.8	15	2.96	2.37	12	12	80	41
NME950WE-3A	Water	1100	925	EG	290/132	208-230/60/3	1 1/2	3	7.9	15	2.65	2.12	12	12	80	41
NME950RE-32A	Remote	920*	830**	EG	290/132	208-230/60/1	1 1/2	2	14.1	20	4.11	3.03	12	12	—	—
NME950RE-3A	Remote	920*	830**	EG	290/132	208-230/60/3	1 1/2	3	11.2	15	3.87	2.71	12	12	—	—

REMOTE CONDENSERS - Dimensions: W x D x H Unit: 45.00" x 22.12" x 29.25" Shipping Carton: 46.88" x 21.75" x 22.50"

Model	Cond. Unit	Finish	Ship Wt. lbs./kg.	Basic Electrical Volts/Hz/Phase	Comp HP	No. of Wires	Min. Circuit Ampacity	Max. Fuse Size or HACR Circuit Breaker	Power KWH/100 lbs.	Water Usage* Gallons/100 lbs.	Condenser 70°/50°F	use with
ERC151-32A	Air	Galv.	135/61	208-230/60/1	—	2	2.6†	15	—	—	—	1-NME950R
ERC302-32A	Air	Galv.	110/50	208-230/60/1	—	2	2.6†	15	—	—	—	1 or 2 NME950R

† Included with minimum circuit ampacity for icemaker. Use this value to determine wire size between icemaker and fan motor.
 Fan relay kit KCMR-230 required when connecting two NME950's to one ERC302-32A (EG) Grey, leathergrain embossed steel with high gloss baked enamel finish.
 * At 0° condenser air, 70° air temperature, 55° water temperature.
 ** At 90° condenser temperature, 90° air temperature, 70° water temperature.

TYPICAL ICE MAKING CAPACITY PER 24 HOURS

AIR TEMPERATURE	NME950A AIR-COOLED WATER TEMPERATURE				lbs. / kg.	NME950W WATER-COOLED WATER TEMPERATURE				lbs. / kg.
	F° C°	50° 10°	70° 21°	90° 32°		F° C°	50° 10°	70° 21°	90° 32°	
70° 21°	1080 490	935 424	805 365	805 365	lbs. / kg.	1100 499	935 424	820 372	820 372	lbs. / kg.
90° 32°	910 410	780 354	690 313	690 313	lbs. / kg.	1070 485	925 420	805 365	805 365	lbs. / kg.
100° 38°	830 376	715 324	625 284	625 284	lbs. / kg.	1035 469	890 400	775 352	775 352	lbs. / kg.

Capacities represent typical production, variances of ±5% are normal.

NME950R REMOTE COOLED

	AMBIENT TEMPERATURE			ICE PRODUCTION
	COND. AIR	INDOOR	WATER	
LOW TEMPERATURE	F° C° 0 -17.8	70 21.1	55 12.8	920 LBS. 417 KG.
NORMAL TEMPERATURE	F° C° 90 32.2	90 32.2	70 21.1	830 LBS. 376 KG.
HIGH TEMPERATURE	F° C° 110 49.3	90 32.2	80 26.7	700 LBS. 318 KG.

OPTIONAL PRE-CHARGED REFRIGERANT TUBE KITS:

RTE25: 25 foot pre-charged tubing with connectors — R-404A (HP62).
RTE40: 40 foot pre-charged tubing with connectors — R-404A (HP62).
OPTIONAL STORAGE BINS: HTB555 or BH550 with KBT14 bin top, BH800 with KBT15 bin top, BH900 with KBT24 bin top (use KBT25 for 2 units side by side on BH900), and B90 and extensions with KBT18 bin top. BH900, BH800, and B90 allow two units side by side.
OPTIONAL STAINLESS STEEL PANEL KIT: SPKFM21: Contains top, front, two end and service panels. Not factory installed.

IMPORTANT OPERATING REQUIREMENTS:

Machine requires voltage indicated on rating name plate. Failures caused by improper voltage are not considered factory defects.
 Scotsman's products are not designed for outdoor installations nor for installation where air temperatures fall below 50° F, or exceed 100° F; nor where water temperatures fall below 40° F, or exceed 100° F. Extended periods of operation at temperatures exceeding these limitations constitutes misuse under the terms of Scotsman Manufacturer's Limited Warranty, resulting in a loss of warranty coverage.

NME SERIES NUGGET ICEMAKER

Model _____ nugget icemaker manufactured by Scotsman Ice Systems. Production capacity to be _____ at 90°F air temperature and 70°F water temperature. Icemaker to have a _____ (air, water, remote air)-cooled condenser. To have factory installed photo-electric eye bin level control to automatically start and stop icemaker. Evaporator and auger to be constructed of stainless steel. Exterior cabinet to be _____ (baked enamel grey leathergrain or 304 series stainless steel) finish. Icemaker to be UL, CUL, NSF and USDA listed.